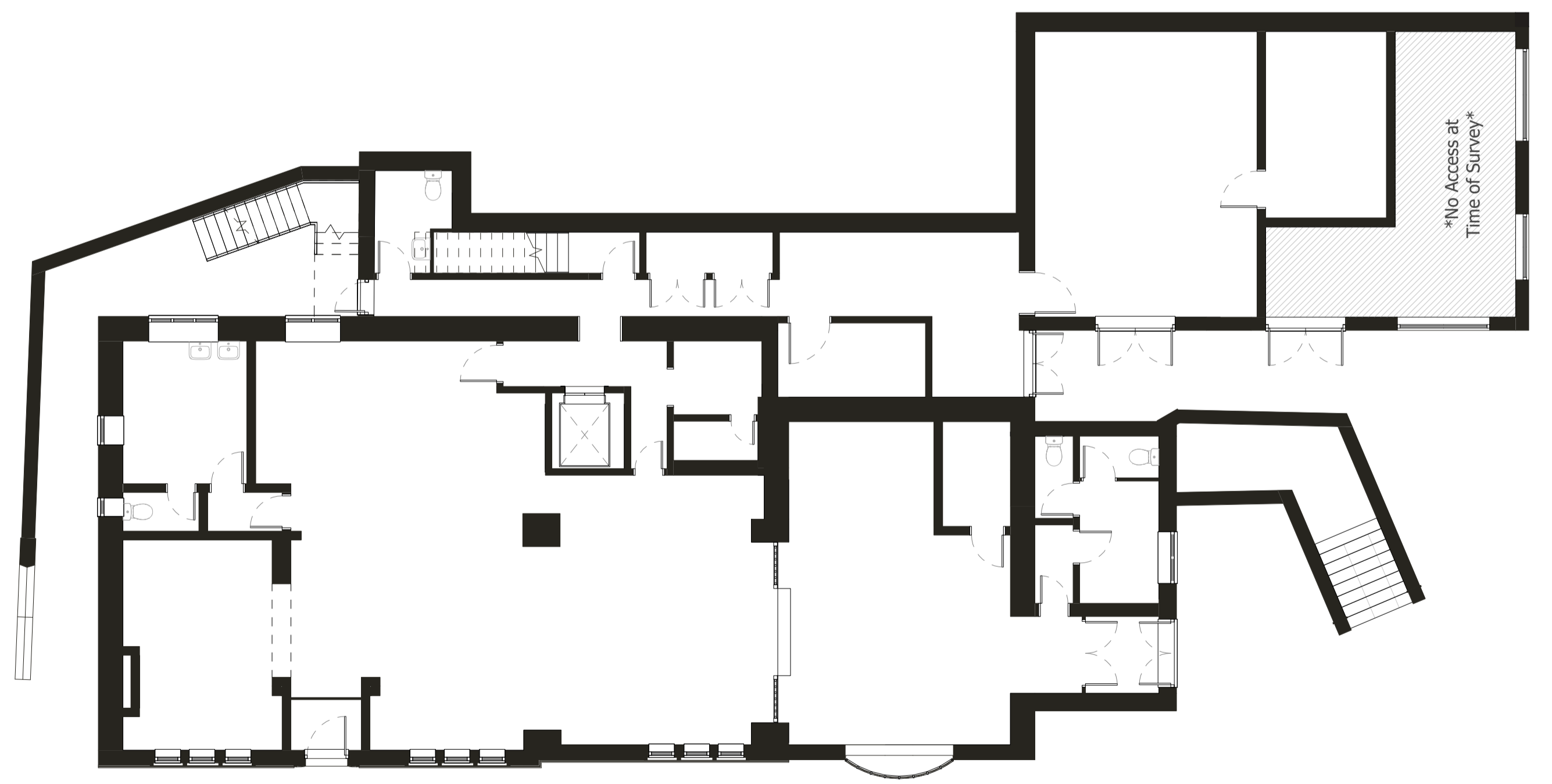


Existing First Floor Plan  
 1 : 100



Proposed First Floor Plan  
 1 : 100



Existing Ground Floor Plan  
 1 : 100



Proposed Ground Floor Plan  
 1 : 100

Additional Information:

Schedule - Area		
Apartment	Area (Metric)	Area (Imperial)
Apartment 1	62.00 m <sup>2</sup>	667.00 sq ft
Apartment 2	62.00 m <sup>2</sup>	667.00 sq ft
Apartment 3	62.00 m <sup>2</sup>	667.00 sq ft
Apartment 4	62.00 m <sup>2</sup>	667.00 sq ft
Apartment 5	62.00 m <sup>2</sup>	667.00 sq ft
Apartment 6	62.00 m <sup>2</sup>	667.00 sq ft
Apartment 7	62.00 m <sup>2</sup>	667.00 sq ft
Apartment 8	62.00 m <sup>2</sup>	667.00 sq ft
Apartment 9	62.00 m <sup>2</sup>	667.00 sq ft
Apartment 10	62.00 m <sup>2</sup>	667.00 sq ft
Apartment 11	62.00 m <sup>2</sup>	667.00 sq ft
Apartment 12	62.00 m <sup>2</sup>	667.00 sq ft
Apartment 13	62.00 m <sup>2</sup>	667.00 sq ft
Apartment 14	62.00 m <sup>2</sup>	667.00 sq ft
Apartment 15	62.00 m <sup>2</sup>	667.00 sq ft
Apartment 16	62.00 m <sup>2</sup>	667.00 sq ft
Apartment 17	62.00 m <sup>2</sup>	667.00 sq ft
Apartment 18	62.00 m <sup>2</sup>	667.00 sq ft
Apartment 19	62.00 m <sup>2</sup>	667.00 sq ft
Apartment 20	62.00 m <sup>2</sup>	667.00 sq ft

Drawing:  
 Existing & Proposed Floor Plans

Client:  
 Trinity Properties Limited

Drawing Number: 2252-B1-PL-200-01		
Drawn: LJ	Scale: 1 : 100	Date: 31/02/2020
Approved: RB	Size: A1	Rev: 3
Status: Planning		

**Millson GROUP**

Byron House  
 10-12 Kennedy St  
 Manchester M2 4BY

0161 228 0558  
 www.millsongroup.co.uk  
 info@millsongroup.co.uk

2252 - Roe Cross Green

Rev	Revision History	By	Date
3	Apartments 1 & 8 Changed to 1 Bed	KC	01/04/2021
2	Minor Layout Changes	LJ	04/06/2020
1	First Issue	LJ	10/02/2020